

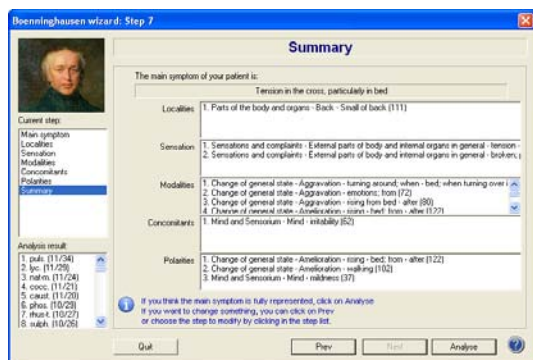
The Bönninghausen Method

An unfailing aid to finding the similimum

The new Bönninghausen Module is a momentous development, eagerly awaited by homœopaths worldwide. Hahnemann credited Bönninghausen as the only homœopath that he would entrust his health to. Master homœopaths, like Close, Boger and Roberts, used Bönninghausen's method, but in the decades after them, the unique case analysis technique of this master homœopath was virtually forgotten, used only by a very few. In recent years however, the wisdom buried in this centuries old approach is being rediscovered and revived. Today, homœopaths around the globe increasingly use Bönninghausen's approach as the case analysis technique of choice.



It is fitting that RADAR brings homœopaths the perfect system to learn and incorporate the Bönninghausen method quickly, easily and effectively. The Bönninghausen Module is yet another milestone in a growing string of revolutionary and unique advances brought to homœopaths by ARCHIBEL, the developers of RADAR, in their quest for homœopathic software excellence. This makes RADAR the first homœopathic software system to bridge the gap between Kent's more specific approach and the more general approach of Bönninghausen. This powerful addition to RADAR will bring a new dimension to your work.



Reliability

BHM was created in close consultation with leading contemporary authorities on the Bönninghausen method, like Fischer, Lara and Coquillard. Their stamp of approval is your passport to using the Bönninghausen Module successfully and with confidence in your practice and studies.

Flexibility

One of the unique advantages of the Bönninghausen method is its flexibility, giving homœopaths a much wider scope for repertory work. The method is equally useful in acute and chronic cases and easy to apply to a range of challenging cases that are difficult to solve through other analysis approaches - such as when there is a paucity of mental symptoms, when mental symptoms have no value or when incomplete symptoms predominate

The **flexibility** of the Bönninghausen Module is a perfect reflection of the flexibility of the method - virtually any approach to the method possible. You can select from the preset strategies like Fischer, Lara or Coquillard, or you can apply your own refined strategy. All the preferences and options can be changed easily to suit your exact style of practice. You even have the flexibility to use any repertory available in RADAR. The Therapeutic Pocketbook, the repertory that Bönninghausen created for his strategy, is the default repertory, but you can just as easily use other repertories that are based on Bönninghausen's work, such as the Boger-Bönninghausen Repertory. You can also use the [new Synthesis 9.1](#) repertory, which includes Bönninghausen's work.

Easy to use

Anyone can easily use the Bönninghausen Module with confidence in only a few minutes. From beginning computer users, budding homœopaths or those new to the Bönninghausen method, to seasoned professionals, the Bönninghausen Module is perfect for everyone.

Beginners can work in a guided way with the **intuitive Wizard**. In a few quick steps you can locate and list symptoms, view the repertorization and identify the similimum. With the Wizard there is no need to classify or identify symptoms according to Localization, Sensation or Modality - the program will automatically allocate them to the correctly. As an added bonus, the polarities or opposing symptoms are also automatically identified.

Or if you are an experienced user, you may prefer to use the **Free Way**. Here you are able to group the symptoms of the Localization, Sensation, Modality and Concomitant categories to suit your needs before viewing the repertorization.

And as with all RADAR modules, you can consult the Online Help files at any time for easy instruction on how to use the module and for more information on the preloaded strategies.

Key features

Work according to any strategy

Repertorize from any repertory

Combine symptoms from different repertories

Symptoms are sorted automatically according to Location, Sensation, Modality, Concomitant

Include Concordances

Polarities or opposing can be applied automatically

Work in a Free Way or with a guided Wizard

Online Help

Add BHM to your RADAR package or use Easy Bönninghausen

Try the Bönninghausen Module. Contact your local representative